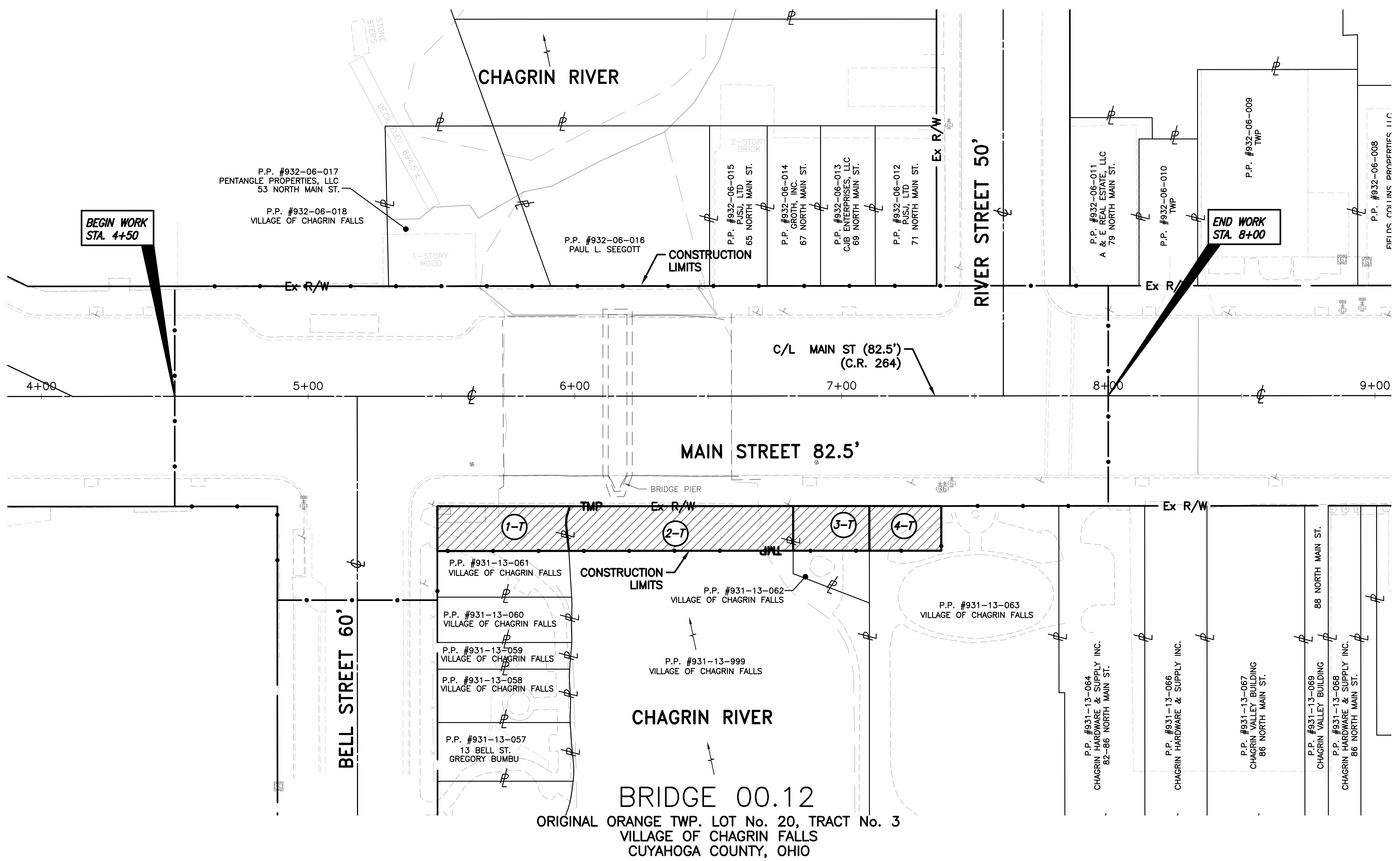


P:\13261 NORTH MAIN STREET BRIDGE SURVEY - C3D 2012\AUTOCAD DRAWING FILES\13261 MASTER 01-30-2017.DWG - RW PROP - CDED-HIGHWAY.CTB - PLOTTED 2/21/2017 8:27 AM BY JENNIFER SAMPLE



BRIDGE 00.12
ORIGINAL ORANGE TWP. LOT No. 20, TRACT No. 3
VILLAGE OF CHAGRIN FALLS
CUYAHOGA COUNTY, OHIO

SUMMARY OF ADDITIONAL RIGHT OF WAY REQUIRED

PARCEL No.	TYPE FUNDS	PROPERTY OWNER	RECORDED		AUDITOR'S RECORD AREA	TOTAL P.R.O.	GROSS TAKE	P.R.O. TAKE	NET TAKE	NET RESIDUE		BLDG.	AUDITOR'S PARCEL NO.	REMARKS
			VOLUME	PAGE						LEFT	RIGHT			
1-T	COUNTY	VILLAGE OF CHAGRIN FALLS	4112	492		-	0.0188 Ac	-	0.0188 Ac	-	-	-	931-13-061	TEMP. FOR ACCESS, REPLACE WALK, BENCHES & LANDSCAPING AS NEEDED
2-T	COUNTY	VILLAGE OF CHAGRIN FALLS				-	0.0325 Ac	-	0.0325 Ac	-	-	-	931-13-999	TEMP. FOR ACCESS
3-T	COUNTY	VILLAGE OF CHAGRIN FALLS				-	0.0110 Ac	-	0.0110 Ac	-	-	-	931-13-062	TEMP. FOR ACCESS, REPLACE WALK, BENCHES & LANDSCAPING AS NEEDED
4-T	COUNTY	VILLAGE OF CHAGRIN FALLS				-	0.0104 Ac	-	0.0104 Ac	-	-	-	931-13-063	TEMP. FOR ACCESS, REPLACE WALK, BENCHES & LANDSCAPING AS NEEDED

REV	DATE	DESCRIPTION
DATE COMPLETED: XX/XX/XX		

RIGHT OF WAY PROPERTY MAP
STA. 4+00 TO STA. 9+00

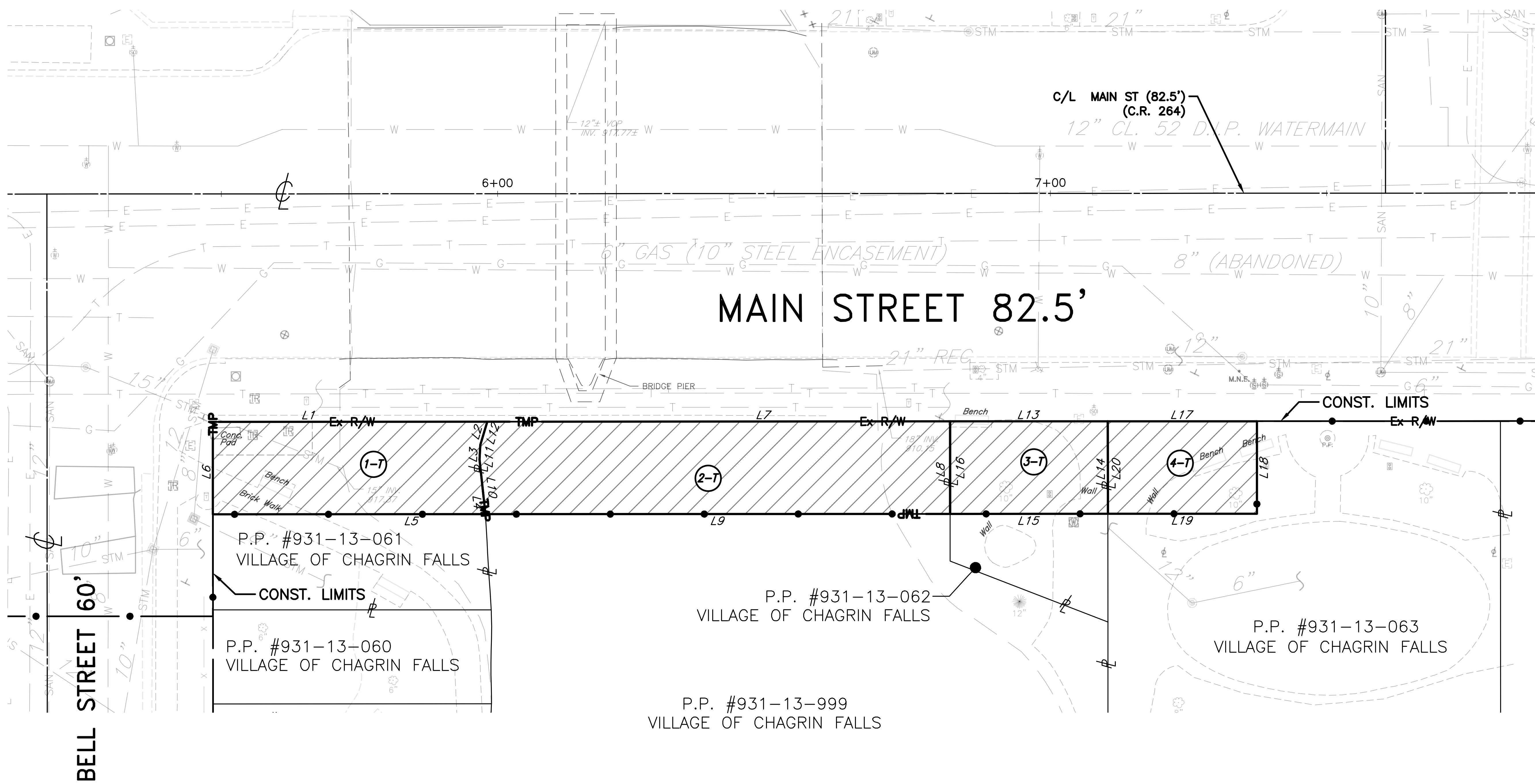
COUNTY ROUTE
C.R. 264

CALCULATED B.A.S. / CHECKED D.F.S.
PID XXXX

XX/XX

1
2

P:\13261 NORTH MAIN STREET BRIDGE SURVEY - C30 2012\AUTOCAD DRAWING FILES\13261 MASTER 01-30-2017.DWG - RW DET - CCDO-HIGHWAY.CTB - PLOTTED 2/21/2017 8:27 AM BY JENNIFER SAMPLE



LINE TABLE 1-T			LINE TABLE 2-T			LINE TABLE 3-T			LINE TABLE 4-T		
NO.	LENGTH	DIRECTION	NO.	LENGTH	DIRECTION	NO.	LENGTH	DIRECTION	NO.	LENGTH	DIRECTION
L1	49.66'	N 25°46'41" W	L7	83.76'	N 25°46'41" W	L13	28.54'	N 25°46'41" W	L17	26.97'	N 25°44'31" W
L2	4.42'	N 80°46'00" E	L8	16.75'	N 64°13'19" E	L14	16.75'	N 64°13'19" E	L18	16.73'	N 64°15'29" E
L3	2.63'	S 67°29'45" W	L9	84.10'	S 25°46'40" E	L15	28.54'	S 25°46'40" E	L19	26.96'	S 25°46'40" E
L4	9.94'	N 58°03'27" E	L10	9.94'	S 58°03'19" W	L16	16.75'	S 64°13'19" W	L20	16.75'	S 64°13'19" W
L5	49.32'	S 25°46'41" E	L11	2.63'	S 67°29'45" W						
L6	16.75'	S 64°13'19" W	L12	4.42'	S 80°46'00" W						

REV	DATE	DESCRIPTION
DATE COMPLETED:		xx/xx/xx

0 10 20
 HORIZONTAL SCALE
 IN FEET

CALCULATED
 B.A.S.
 CHECKED
 D.F.S.

PID
 XXXX

RIGHT OF WAY DETAIL SHEET

COUNTY ROUTE
 C.R. 264

XX/XX

2
2