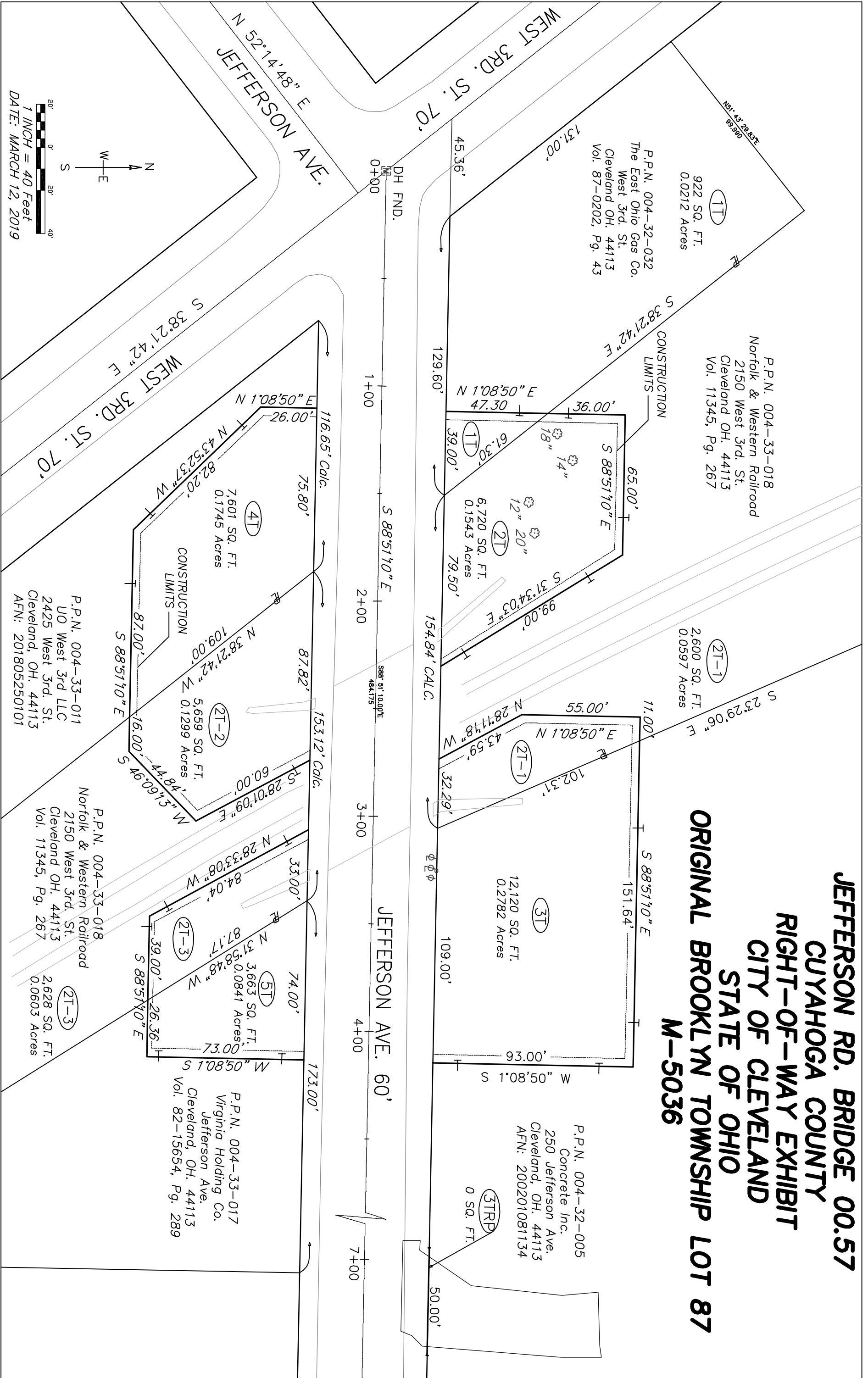


**JEFFERSON RD. BRIDGE 00.57  
 CUYAHOGA COUNTY  
 RIGHT-OF-WAY EXHIBIT  
 CITY OF CLEVELAND  
 STATE OF OHIO  
 ORIGINAL BROOKLYN TOWNSHIP LOT 87  
 M-5036**



P.P.N. 004-32-032  
 The East Ohio Gas Co.  
 West 3rd St.  
 Cleveland OH, 44113  
 Vol. 87-0202, Pg. 43

P.P.N. 004-33-018  
 Norfolk & Western Railroad  
 2150 West 3rd St.  
 Cleveland OH, 44113  
 Vol. 11345, Pg. 267

2,600 SQ. FT.  
 0.0597 Acres

12,120 SQ. FT.  
 0.2782 Acres

P.P.N. 004-32-005  
 Concrete Inc.  
 250 Jefferson Ave.  
 Cleveland, OH, 44113  
 AFN: 200201081134

P.P.N. 004-33-017  
 Virginia Holding Co.  
 Jefferson Ave.  
 Cleveland, OH, 44113  
 Vol. 82-15654, Pg. 289

P.P.N. 004-33-011  
 UO West 3rd LLC  
 2425 West 3rd St.  
 Cleveland, OH, 44113  
 AFN: 201805250101

P.P.N. 004-33-018  
 Norfolk & Western Railroad  
 2150 West 3rd St.  
 Cleveland OH, 44113  
 Vol. 11345, Pg. 267

2,628 SQ. FT.  
 0.0603 Acres

