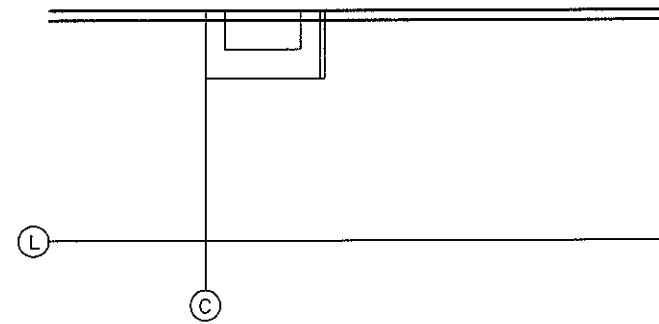


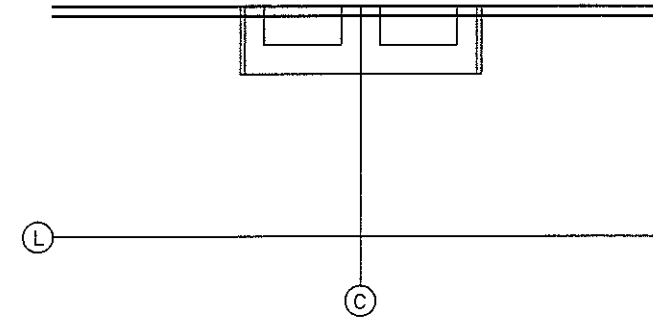
**SINGLE BASINS – CUYAHOGA COUNTY No. 3C**

**TWIN BASINS – CUYAHOGA COUNTY TWIN 3C**



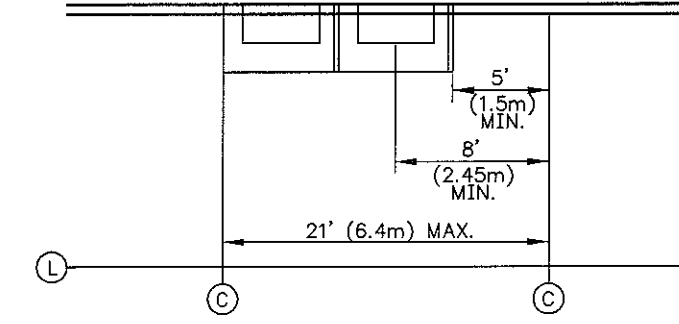
**OPTION 1**

LOCATE CONTRACTION JOINT TO ALIGN/ABUT EITHER SIDE OF TYPICAL BLOCKOUT.



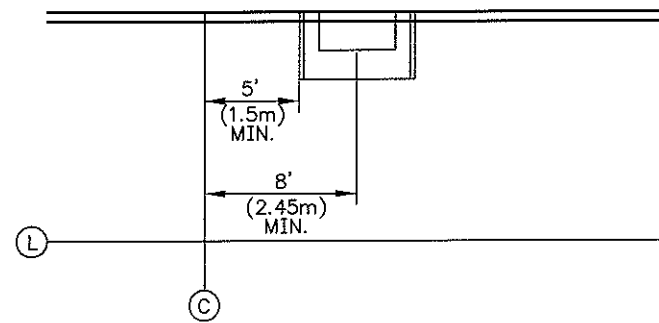
**OPTION 1**

LOCATE CONTRACTION JOINT AT THE MIDPOINT OF THE TWIN BASIN BLOCKOUTS, PER CB-3C2.



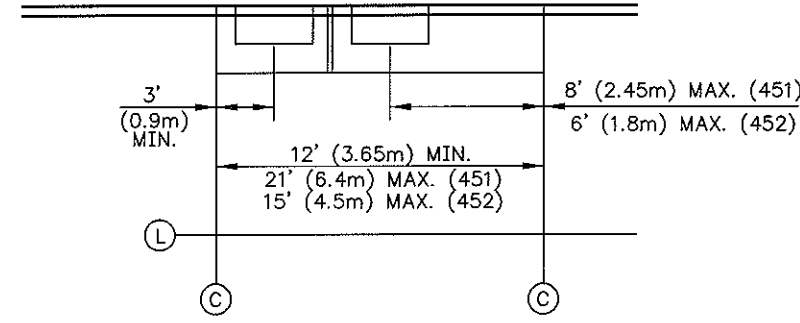
**OPTION 2B  
(FOR 451 PAVEMENT ONLY)**

IF THE CONTRACTION JOINT CANNOT BE LOCATED, PER OPTION 1, ALIGN/ABUT EITHER SIDE OF THE TYPICAL TWIN BASIN BLOCKOUT. ALSO NOTE, IF THE NEXT NEAREST CONTRACTION JOINT IS LESS THAN FIVE (5) FEET FROM THE TYPICAL TWIN BASIN BLOCKOUT, EXTEND THE BLOCKOUT TO THE CONTRACTION JOINT PER OPTION 2A.



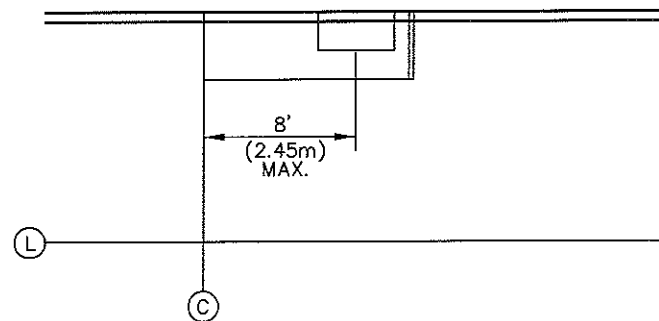
**OPTION 2**

IF PER OPTION 1, THE CONTRACTION JOINT CANNOT BE ALIGNED WITH TYPICAL BLOCKOUT, LOCATE JOINT A MINIMUM OF FIVE (5) FEET (1.5m) FROM BLOCKOUT.



**OPTION 2A**

IF THE CONTRACTION JOINT CANNOT BE LOCATED PER OPTION 1, TRY TO LOCATE A CONTRACTION JOINT NO MORE THAN EIGHT (8) FEET (2.45m) FOR 451 PAVEMENT AND NO MORE THAN SIX (6) FEET (1.8m) FOR 452 PAVEMENT EITHER SIDE OF THE CENTER OF CASTING LOCATIONS AND EXTEND THE BLOCKOUT BETWEEN THE CONTRACTION JOINTS.



**OPTION 3**

IF PER OPTION 2, CONTRACTION JOINT CANNOT BE ALIGNED WITH TYPICAL BLOCKOUT AND IS CLOSER THAN FIVE (5) FEET (1.5m) FROM TYPICAL BLOCKOUT, EXTEND BLOCKOUT TO CONTRACTION JOINT.

**NOTES**

- (1) FOR ADDITIONAL SINGLE CATCH BASIN BLOCKOUT DETAILS, SEE THE CUYAHOGA COUNTY ENGINEER'S CONSTRUCTION DRAWING CB-3C (ENGLISH OR METRIC VERSION).
  - (2) FOR ADDITIONAL TWIN CATCH BASIN BLOCKOUT DETAILS, SEE THE CUYAHOGA COUNTY ENGINEER'S CONSTRUCTION DRAWING CB-3C2.
  - (3) BLOCKOUT LOCATIONS RELATIVE TO PROPOSED EXPANSION (E) JOINTS SHALL BE THE SAME AS THE CONTRACTION JOINTS SHOWN HEREON.
- (C) CONTRACTION JOINT, PER BP-2.2
  - (E) EXPANSION JOINT, PER BP-2.2
  - (L) LONGITUDINAL JOINT, PER BP-2.1

<b>CUYAHOGA COUNTY ENGINEER</b>	
<b>TYPICAL CATCH BASIN CASTING PAVEMENT BLOCKOUTS</b>	<b>DATE</b> 12-07-99 08-15-00 10-10-08
<b>CONSTRUCTION DRAWING</b>	<b>BP-2.8C</b>

