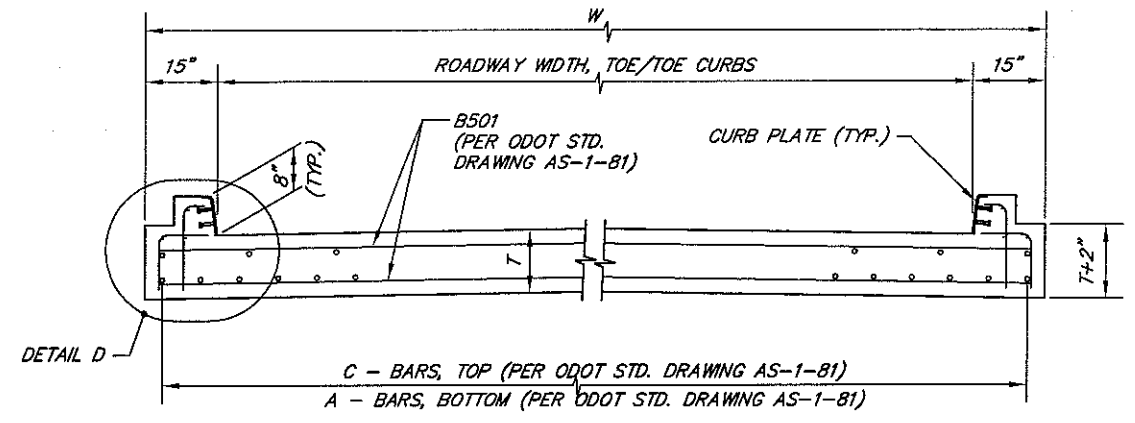
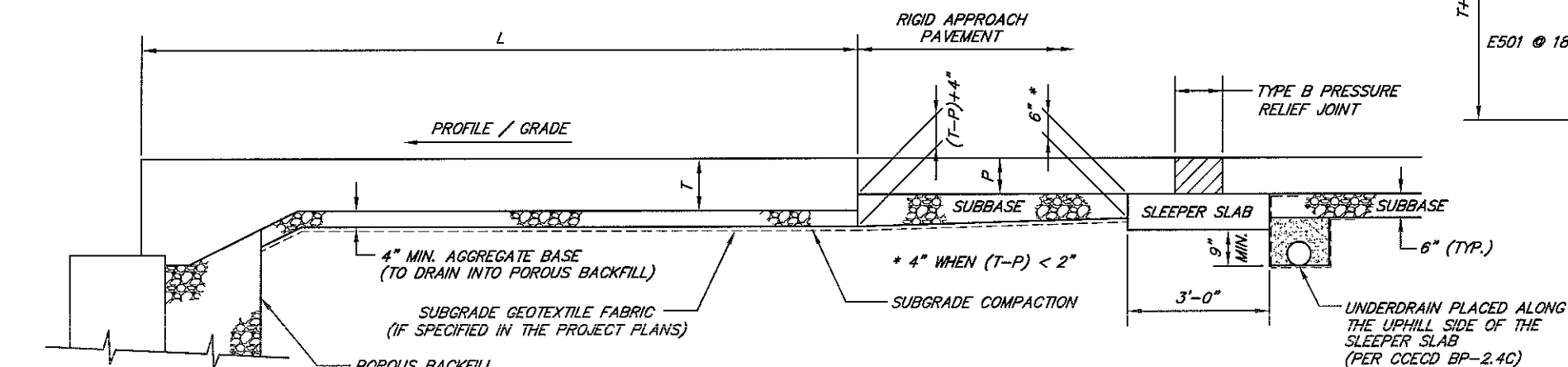


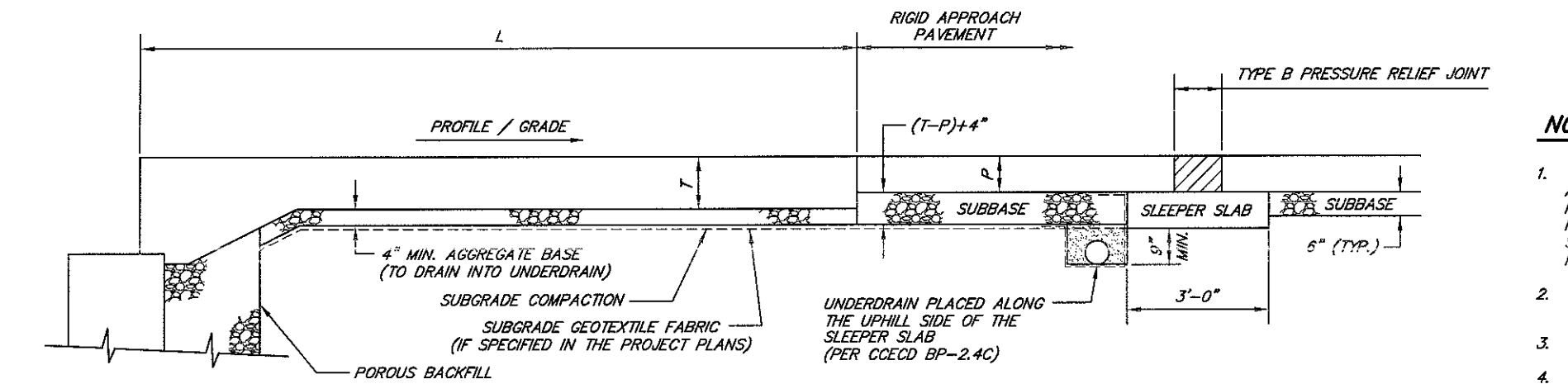
PLAN
(TYPE B PRESSURE RELIEF JOINT IN APPROACH PAVEMENT)



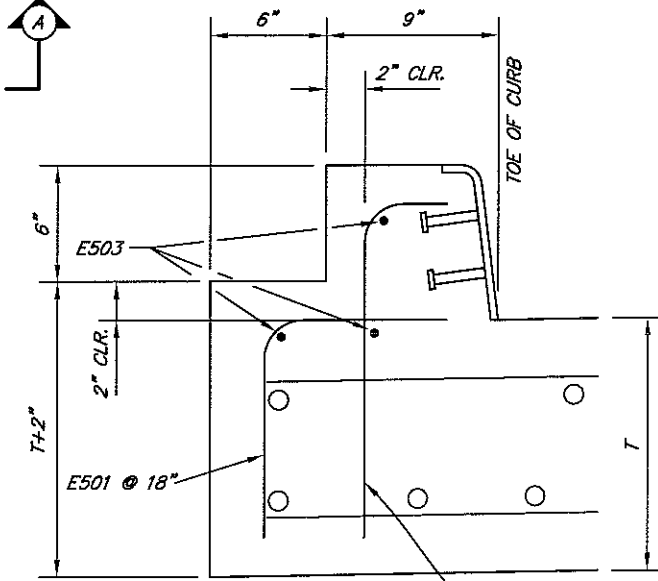
SECTION B-B



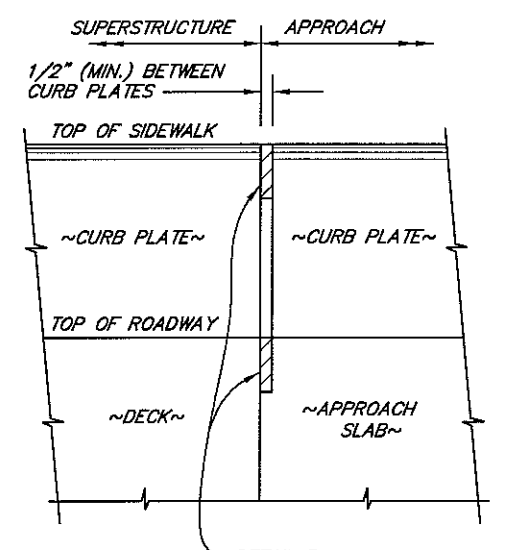
SECTION A-A
(PROFILE/GRADE SLOPE TOWARDS ABUTMENT)



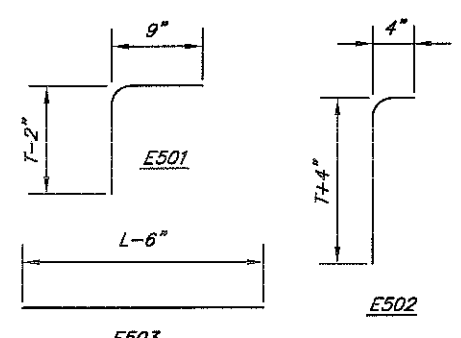
SECTION A-A
(PROFILE/GRADE SLOPE TOWARDS APPROACH PAVEMENT)



DETAIL D



VIEW C-C
PER ODOT STD. DRAWING AS-1-81
OR AS DETAILED IN THE PROJECT PLANS



CURB REBAR

LEGEND

- L = APPROACH SLAB LENGTH
- T = APPROACH SLAB THICKNESS
- P = APPROACH PAVEMENT THICKNESS
- CCECD = CUYAHOGA COUNTY CONSTRUCTION DRAWING
- CLR. = CLEAR
- ODOT = OHIO DEPARTMENT OF TRANSPORTATION
- MIN. = MINIMUM
- MAX. = MAXIMUM
- STD. = STANDARD
- TYP. = TYPICAL

NOTES:

1. THE FOUR-INCH (4") MINIMUM AGGREGATE BASE AND SUBGRADE GEOTEXTILE FABRIC BENEATH THE APPROACH SLAB SHALL BE OF THE SAME MATERIALS AS THOSE SPECIFIED FOR THE APPROACH PAVEMENT. ALL MATERIAL AND LABOR COSTS ASSOCIATED WITH THE INSTALLATION OF THE FOUR-INCH AGGREGATE BASE, SUBGRADE GEOTEXTILE FABRIC (WHERE SPECIFIED) AND THE SUBGRADE COMPACTION (ITEM 204) SHALL BE MEASURED AND PAID FOR SEPARATELY PER THE PERTINENT CONTRACT ITEM.
2. THE TYPE B PRESSURE RELIEF JOINT SHALL BE DESIGNED PER CUYAHOGA COUNTY ENGINEER CONSTRUCTION DRAWING BP-2.4C.
3. THE CURB PLATE SHALL BE DESIGNED PER CUYAHOGA COUNTY ENGINEER CONSTRUCTION DRAWING CP-1C.
4. THE APPROACH SLAB SHALL BE DESIGNED PER ODOT STANDARD DRAWING AS-1-81.
5. THE POROUS BACKFILL MATERIAL SHALL BE LIMITED TO STONE AND INCLUDED FOR PAYMENT UNDER ITEM 518, AS PER PLAN.

Plot Scale: 1:2 (Half-Size)

DESIGN AGENCY
 CUYAHOGA COUNTY
 DEPARTMENT OF PUBLIC WORKS
DATE
 3-01-07
REVIEWED
 BGF
 08-06-11
DRAWN
 DIMM
 05-07-07
 08-25-08
DESIGNED
 DIMM
 05-07-07
 08-25-08
REFERENCED CONSTRUCTION DRAWINGS
 AS-1-81 (ODOT)
 BP-2.4C (CUY. COUNTY)
 CP-1C (CUY. COUNTY)
REINFORCED CONCRETE APPROACH SLAB
 CURB, TYPE B PRESSURE RELIEF JOINT & BASE DETAILS
AS-2C
 CUYAHOGA COUNTY ENGINEER
 CONSTRUCTION DRAWING
 1/1